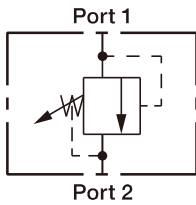


RV-26



SYMBOLS



ORDER CODES

RV 10 A - 26 - N - 30

① ② ③ ④ ⑤

① ▶ Model Name	RV-26	
② ▶ Valve Size	10, 12, 16	
③ ▶ Adjustment Option	A	1/4" Hex allen head
	B	1 1/2" dia alum. knob
④ ▶ Material of Seal	N	buna-N
	V	viton

⑤ ▶ Spring Range

	RV10-26		RV12-26		RV16-26
04	6.9 ~ 27.6bar (100 ~ 400psi)	04	6.9 ~ 27.6bar (100 ~ 400psi)	03	9.7 ~ 20.7bar (140 ~ 300psi)
15	10.3 ~ 103.4bar (150 ~ 1500psi)	15	3.8 ~ 110.3bar (200 ~ 1600psi)	06	15.9 ~ 41.4bar (230 ~ 600psi)
30	27.6 ~ 206.9bar (400 ~ 3000psi)	30	31.0 ~ 206.9bar (450 ~ 3000psi)	15	36.6 ~ 103.5bar (530 ~ 1500psi)
		35	34.5 ~ 241.4bar (500 ~ 3500psi)	35	82.8 ~ 241.6bar (1200 ~ 3500psi)

MODEL SPEC.

Model	Cavity	Operating Pressure (bar)	Proof Pressure (bar)	Flow (l/min)	Internal Leakage (l/min)	Installation Torque (Nm)	Weight (kg)
RV10-26	SAE-10-2	240	420	113.6	115	33.9	0.23
RV12-26	SAE-12-2	240	420	189.3	115	40.6	0.345
RV16-26	SAE-16-2	276	420	302.8	115	67.7	0.56

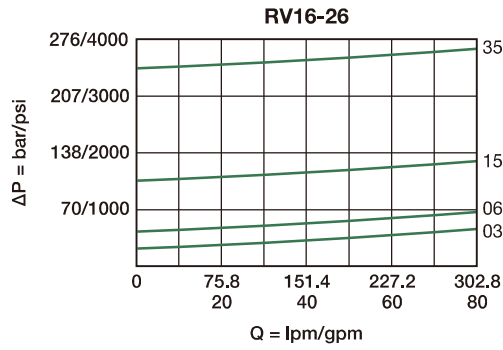
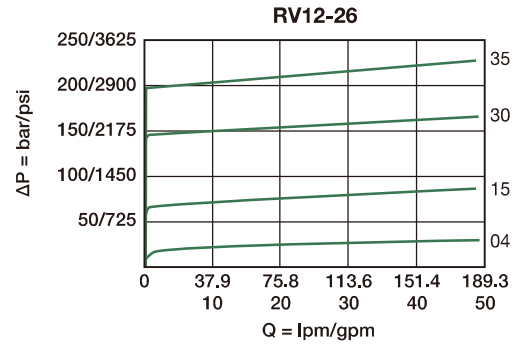
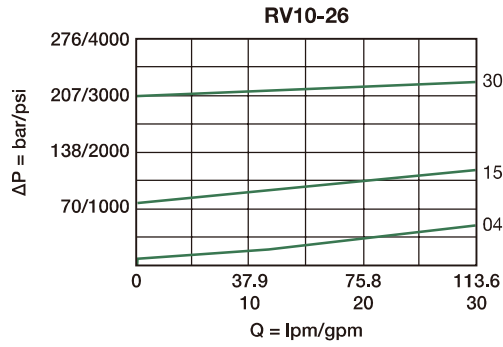
* Operating temperature : -40 ~ 120°C (-40 ~ 248°F)

PERFORMANCE CURVES

► Pressure Rise

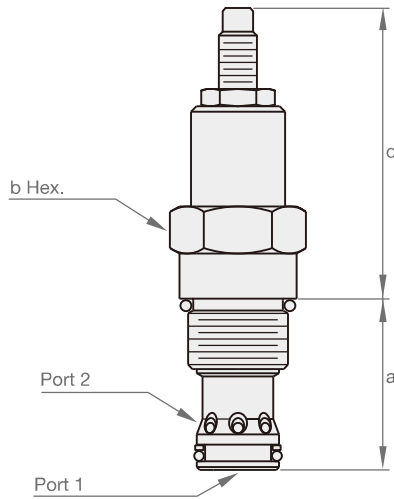
— Port 1 → Port 2

* 32cSt / 150 ssu oil at 40°C



DIMENSION

(UNIT : mm)



Model	a	b Hex.	c
RV10-26	32.05	25.4	78.95
RV12-26	45.58	31.8	78.35
RV16-26	45.40	38.1	89.45