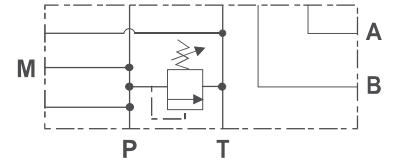


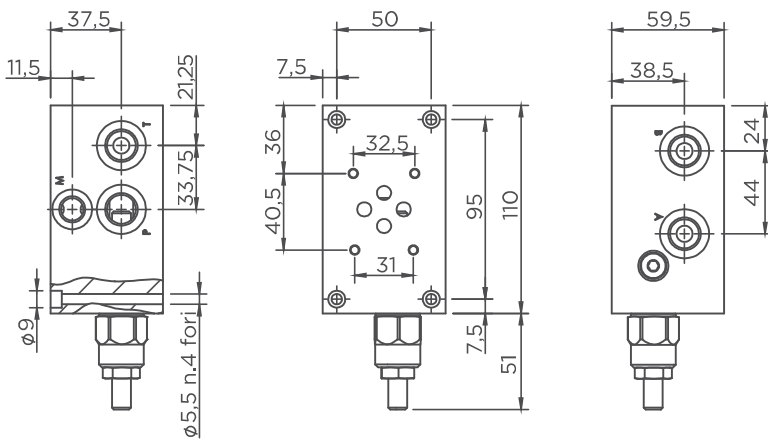
# SBC3

BASE SINGOLA CETOP 3  
CETOP 3 SINGLE MANIFOLD



## CARATTERISTICHE - HYDRAULICS FEATURES

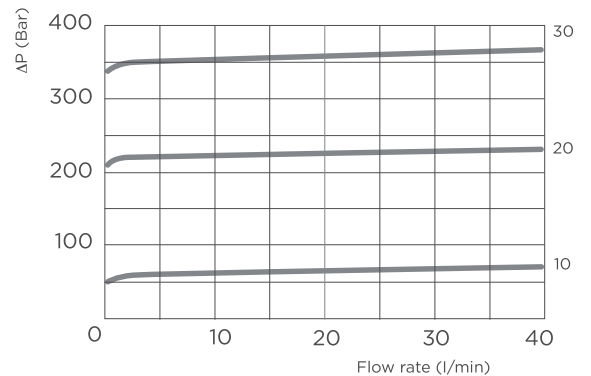
Molla Spring	10	20	30
Portata max Max flow (l/min)	40	40	40
Taratura max Max setting (bar)	50	210	350
Press. max Max pressure (bar)	250	250	250



Materiali: Cartuccia in acciaio zincato, parti interne in acciaio trattato termicamente, corpo in alluminio.  
Materials: Zinc plated steel cartridge, hardened steel inner parts, aluminium manifold.

## PRESSIONE/PORTATA - PRESSURE/FLOW

Solo valvola (senza cavità) - Valve only (without cavity)



## DIMENSIONI E PESI - EXTERNAL DIMENSIONS AND WEIGHTS

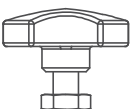
ATTACCHI "A" "B" "P" "T" BSPP PORTS	ATTACCO "M" MANOMETRO BSPP PORT "M" GAUGE BSPP	Peso (Kg) Weight (Kg)
"A" "B" "P" "T" BSPP	"M" GAUGE BSPP	1,3
1/2	1/4	

REGOLAZIONE  
ADJUSTMENT

1



2



3



## CODICE ORDINAZIONE - ORDERING CODE

**SBC3**

MOLLA (BAR)  
SPRING (BAR)

**10** 5-50  
**20** 40-210  
**30** 100-350

REGOLAZIONE  
ADJUSTMENT

**1** Grano - Socket screw  
**2** Volantino - Handknob  
**3** Cappello - Tamperproof cap

VARIANTE  
VARIANT

**00**  
No variante  
No variant