

Technical data

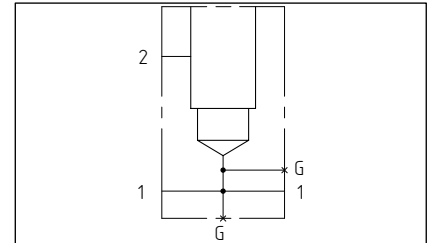
Steel body pressure rating 350 bar	Cavity T11A	Steel body weight 1.16 kg
---------------------------------------	----------------	------------------------------

Body material X

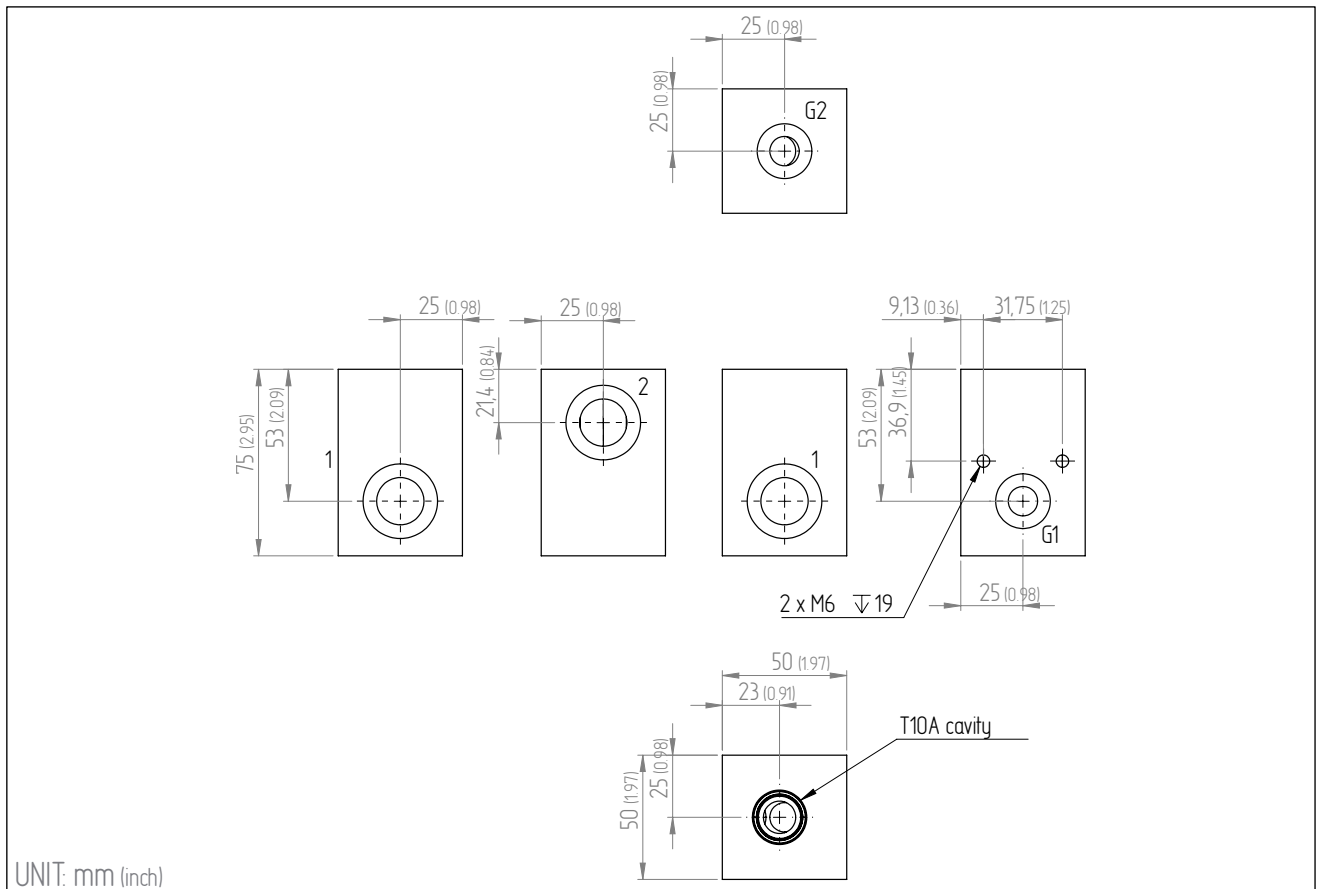
X	Material, coating
S3	steel, zinc

Port size Y

Y	Ports 1,2	Ports G1,G2
1	1/2" BSP	1/4" BSP



Dimensions



Cartridge valve selection Z*

Z	Valve code	Description	Hydraulic symbol	Data
	body only			
11	RB2C-T10A-LAN	Pilot stage, direct acting relief valve		7-210 bar
12	RB2C-T10A-LBN	relief valve		3.5-105 bar
13	RB2C-T10A-LCN	- pilot capacity		10.5-400 bar
14	RB2C-T10-LNN	(1 l/min, 0.15 kg)		5-55 bar
21	RP2C-T10A-LAN	Pilot operated relief valve		7-210 bar
22	RP2C-T10A-LBN	(95 l/min, 0.15 kg)		3.5-105 bar
23	RP2C-T10A-LCN			10.5-420 bar
24	RP2C-T10A-LEN			2-25 bar

*Z is not marked on the body

