

Technical data

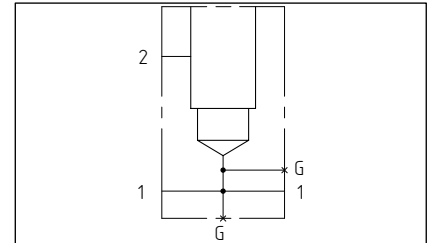
Steel body pressure rating 350 bar	Cavity T3A	Steel body weight 1.32 kg
---------------------------------------	---------------	------------------------------

Body material X

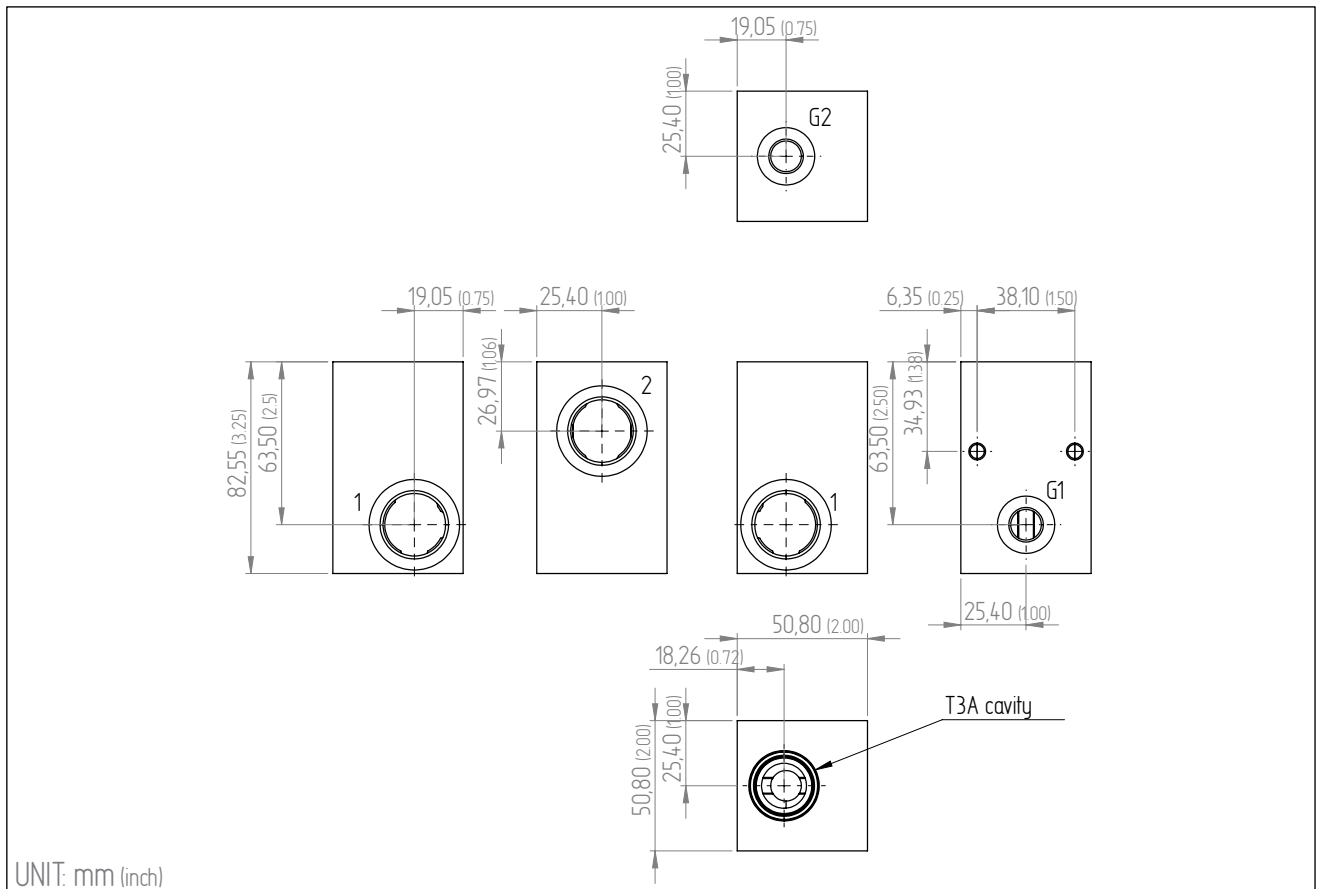
X	Material, coating
S3	steel, zinc

Port size Y

Y	Ports 1,2	Ports G1,G2
1	3/4" BSP	1/4" BSP



Dimensions



Cartridge valve selection Z*

Z	Valve code	Description	Hydraulic symbol	Data
	body only			
11	RD3A-T3A-LAN	Direct acting relief valve (200 l/min, 0.295 kg)		35-210 bar
12	RD3A-T3A-LCN			70-420 bar
13	RD3A-T3A-LDN			14-55 bar
21	RP3C-T3A-LAN	Pilot operated relief valve (200 l/min, 0.25 kg)		7-210 bar
22	RP3C-T3A-LBN			3.5-105 bar
23	RP3C-T3A-LCN			10.5-420 bar
24	RP3C-T3A-LEN			2-25 bar

*Z is not marked on the body

