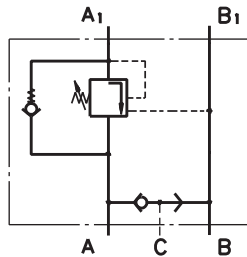


VALVES FOR HYDRAULIC MOTORS

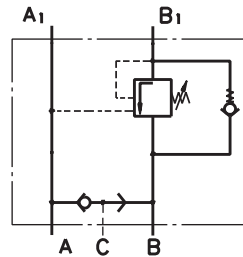
CONTENTS

Valves for MP, MR and MH type KPBR ...	57	Crossover Relief Valves	66
Valves for MS type KPBS	58	Valves for MP, MR and MH type KP...R	67
Valves for MT type KPBT	59	Valves for MS type KP...S	67
Valves for MV type KPBV	60	Valves for MT type KP...T	68
Valves for RW and HW type KPBW	61	Valves for MV type KP...V	70
Valves for HP and HR type KPBHR...E ...	62	Valves for RW and HW type KP...W	72
Valves for HP and HR type KPBHR...D ...	63	Valves for HR and RK type KPDHR and KPDRK ...	74
Switch valves type KPWR and KPWS ...	64	Order Code	75+76
Switch valves type KPWT and KPWW	65		

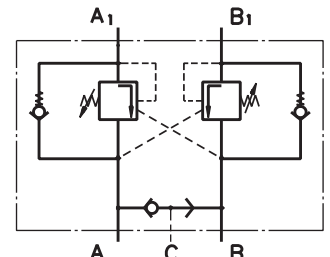
OVERCENTER VALVES with BRAKE CONTROL



Single Overcenter Valves with Brake Control type KPBR ... AE



Single Overcenter Valves with Brake Control type KPBR ... BE



Dual Overcenter Valves with Brake Control type KPBR ... D

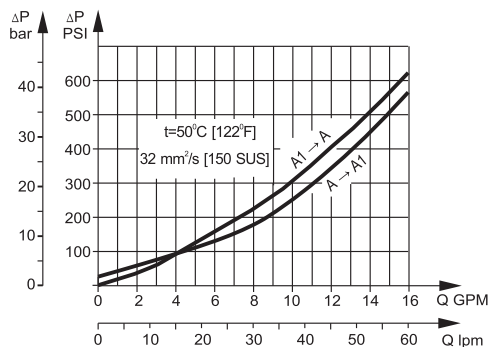
SPECIFICATION DATA

Parameters	Type											
	KPBR...E	KPBS...E	KPBR...D	KPBS...D	KPBW...E	KPBW...D	KPBHR...E	KPBHR...D	KPBT...E	KPBT...D	KPBV...E	KPBV...D
Flow Rate, lpm [GPM]	60 [15.85]						100 [26.4]		200 [52.8]			
Rated Pressure*, bar [PSI]	60÷280 [870÷4060]						70÷250 [1015÷3625]					
Pilot Ratio	4,25:1											
Weight, kg [lb]	3,020 [6.658]	2,900 [6.39]	3,060 [6.746]	2,920 [6.437]	3,050 [7.724]	3,140 [6.923]	2,300 [5.071]	2,400 [5.291]	5,400 [11.905]	5,800 [12.787]	9,200 [20.283]	9,750 [21.495]

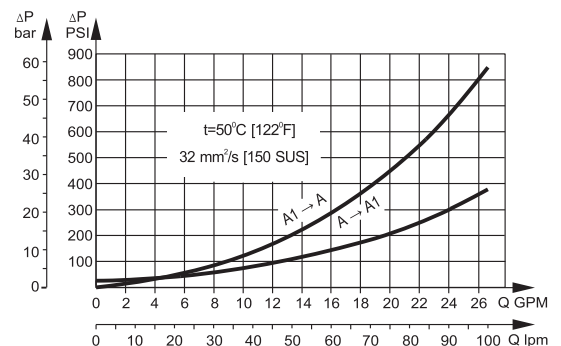
*Pressure Settings are at flow rate of 5 lpm [1.3 GPM] and viscosity 32 mm²/s [150 SUS] at 50 °C [122° F].

PRESSURE LOSSES

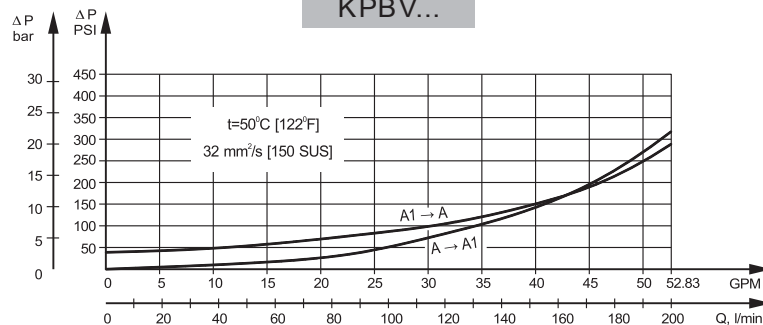
KPBR..., KPBS..., KPBW..., KPBHR...



KPBT...

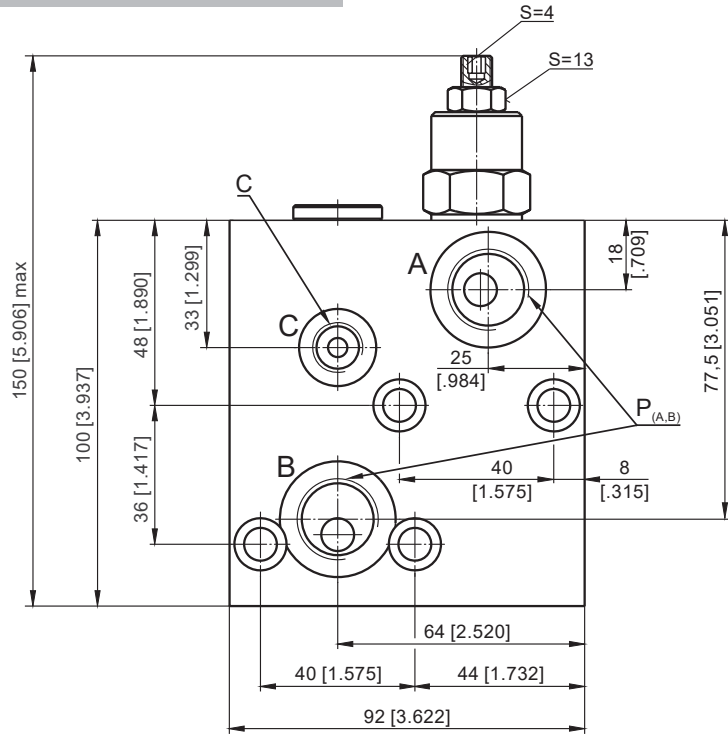
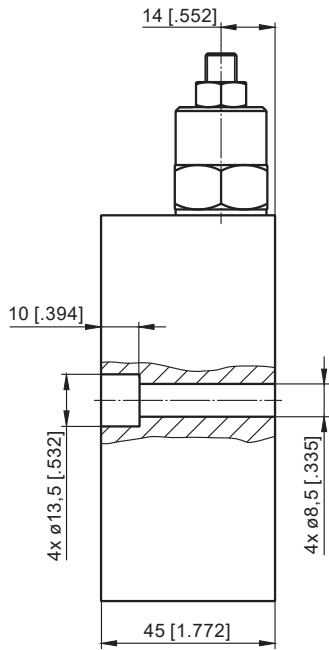


KPBV...

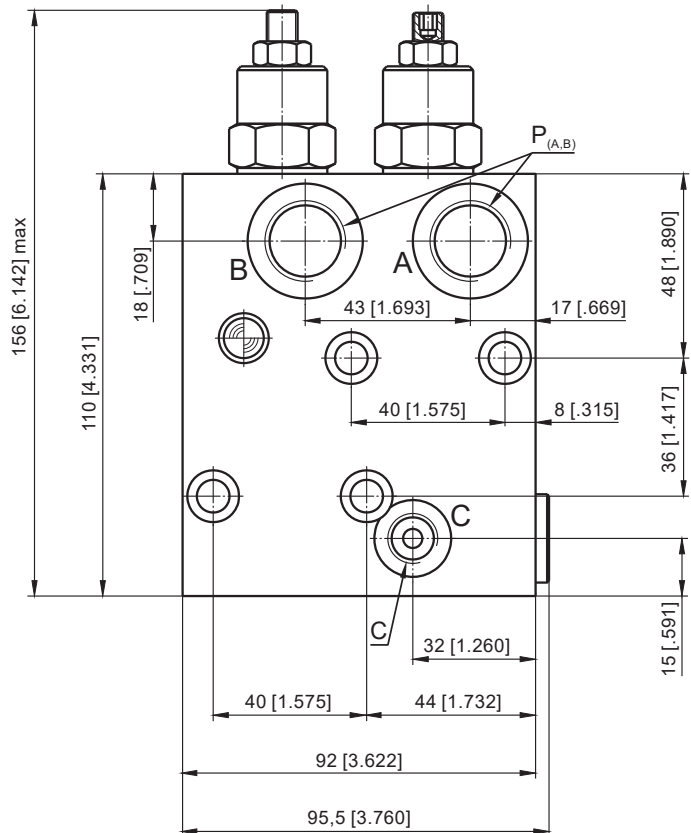
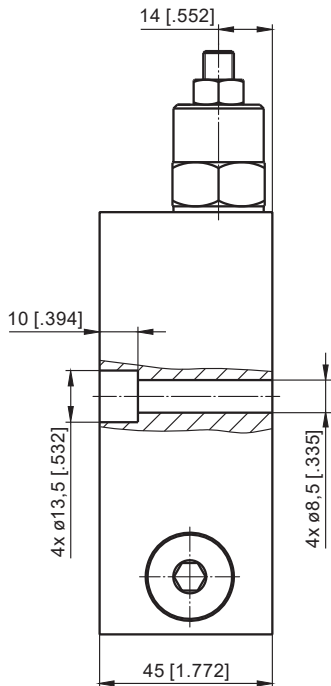


VALVES for MP, MR and MH HYDRAULIC MOTORS

SINGLE VALVE KPBR-250/1/E...



DUAL VALVE KPBR-250/1/D...



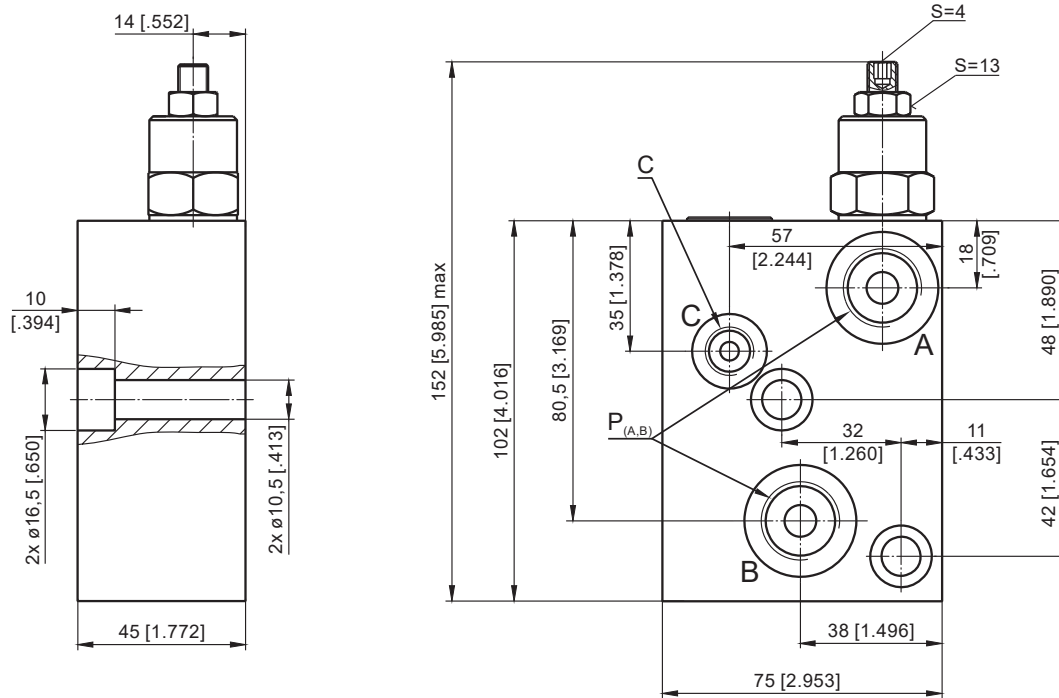
	Thread Ports - P _(A,B)	Thread Ports - C
-	G1/2 16 [.63] depth	G1/4 12 [.47] depth
M	M22x1,5 16 [.63] depth	M14x1,5 12 [.47] depth
A	7/8 - 14 UNF O-ring 16 [.63] depth	7/16 - 20 UNF O-ring 12,7 [.50] depth



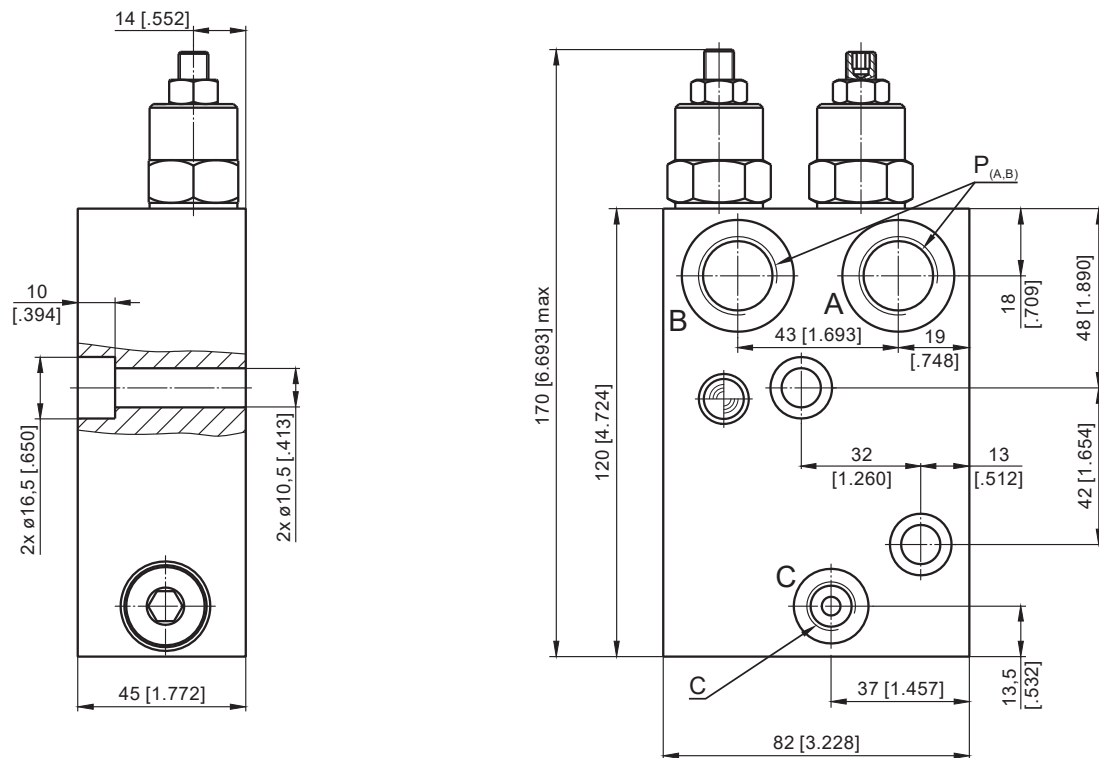
Note: KPBR Blocks are installed directly on MP, MR and MH Motors with four screws M8x45 - 8.8 DIN 912 or 5/16-18 UNC, 1.75 long ANSI B 18.3 . Tightening torque 2,0^{+0.5} daNm [177⁺⁴⁴ lb-in].

VALVES for MS HYDRAULIC MOTORS

SINGLE VALVE KPBS-250/1/E...



DUAL VALVE KPBS-250/1/D...



	Thread Ports - P _(A,B)	Thread Ports - C
-	G1/2 16 [.63] depth	G1/4 12 [.47] depth
M	M22x1,5 16 [.63] depth	M14x1,5 12 [.47] depth
A	7/8 - 14 UNF O-ring 16 [.63] depth	7/16 - 20 UNF O-ring 12,7 [.50] depth

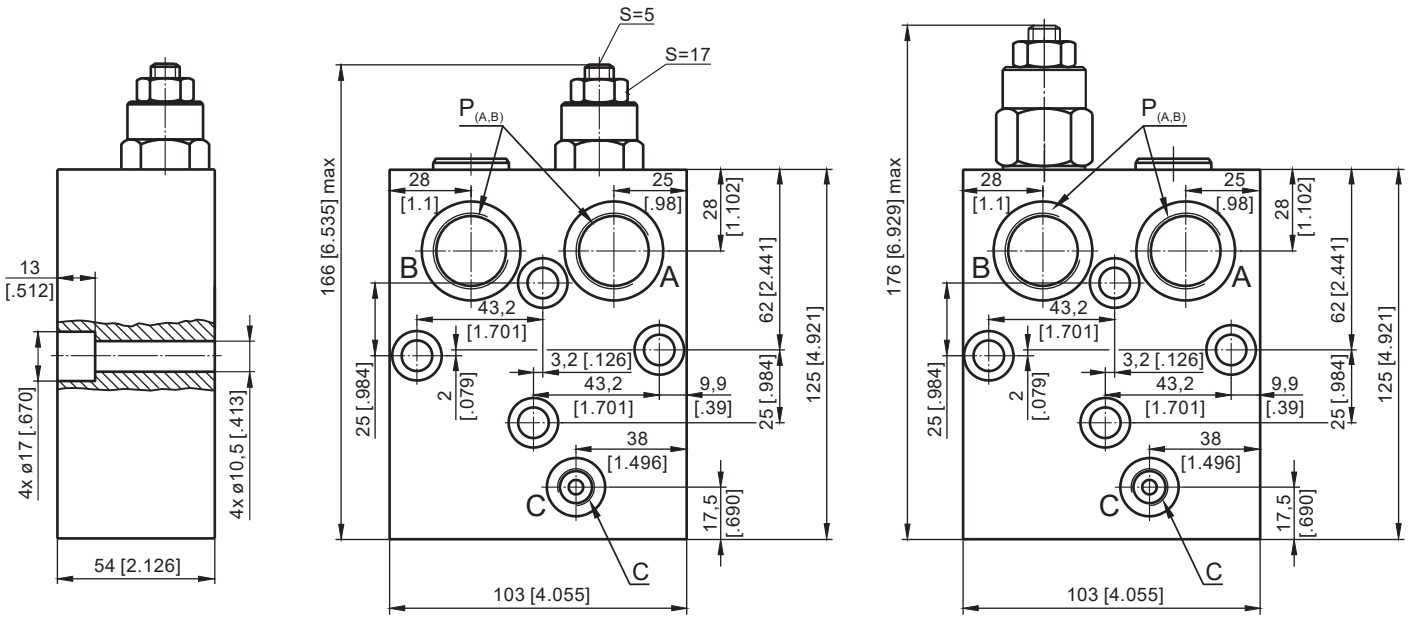


Note: KPBS Blocks are installed directly on MS Motors with two screws M10x45 - 8.8 DIN 912 or 3/8-16UNC, 1.75 long ANSI B 18.3 . Tightening torque 3,5 daNm [310 lb-in].

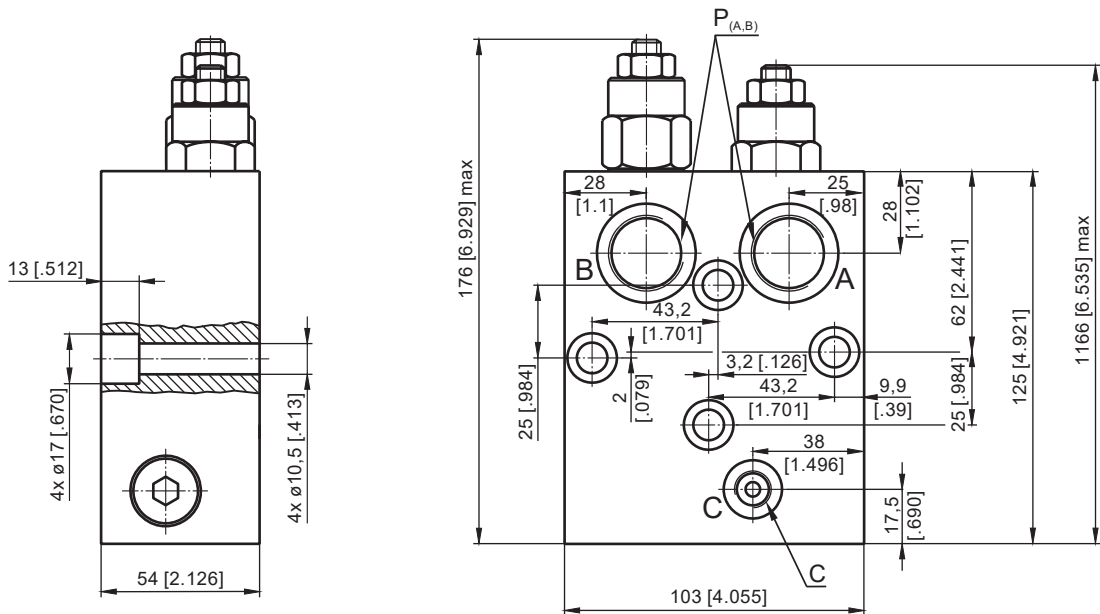
VALVES for MT HYDRAULIC MOTORS

SINGLE VALVE KPBT-250/1/AE...

SINGLE VALVE KPBT-250/1/BE...



DUAL VALVE KPBT-250/1/D...



	Thread Ports - P _(A,B)	Thread Ports - C
-	G3/4 17 [.67] depth	G1/4 14 [.55] depth
M	M27 \times 17 [.67] depth	M14 \times 1,5 14 [.55] depth
A	1 1/16 - 12 UN O-ring 17 [.67] depth	7/16 - 20 UNF O-ring 12,7 [.50] depth



Note: KPBT Blocks are installed directly on MT Motors with four screws M10x50 - 8.8 DIN 912. Tightening torque 3,5 daNm [310 lb-in].