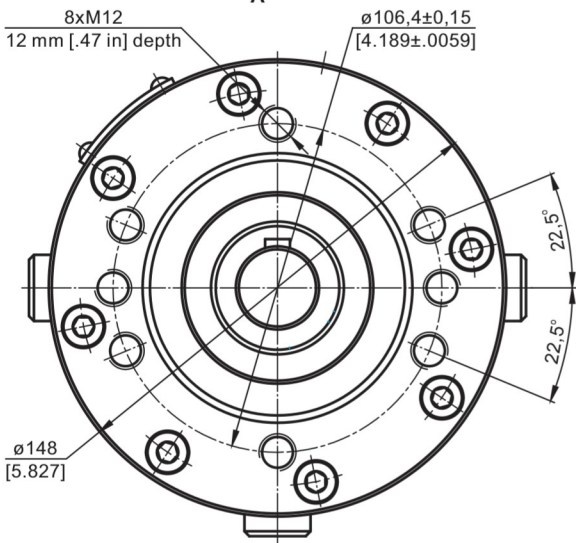
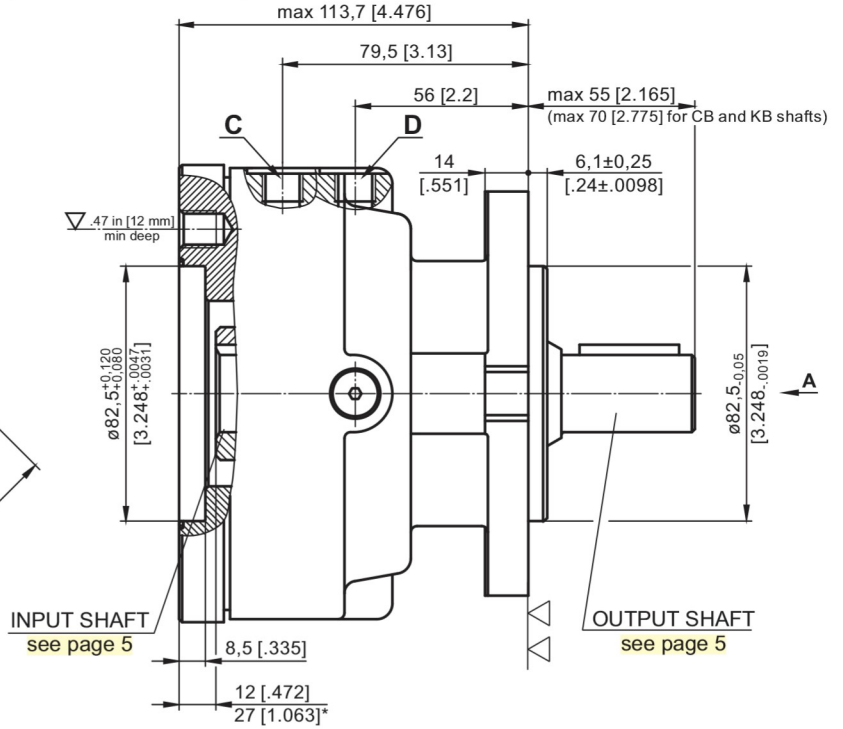
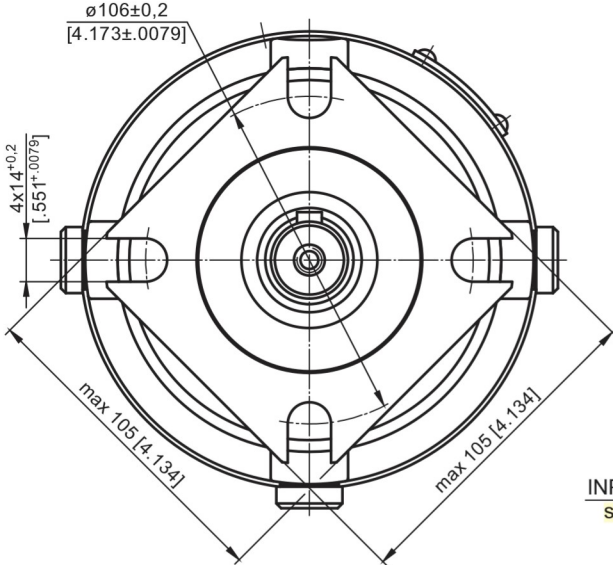


HYDRAULIC DISC BRAKE for FLANGE ATTACHMENT to MP, MR and MS HYDRAULIC MOTORS

TYPE LB/288



▽ - Place for attachment (tightening torque for screw M12-12.9 - $7^{+0,5}$ daNm [620⁺⁴⁴ lb-in])

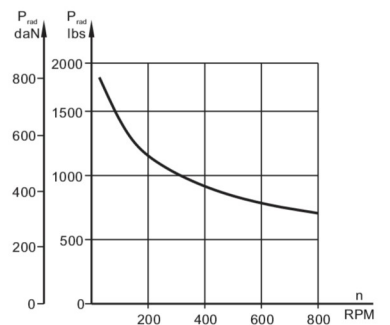
▽▽ - Place for attachment

C: Brake release Port - G $\frac{1}{4}$, 9 mm [.35 in] depth

D: Drainage tap - G $\frac{1}{4}$, 9 mm [.35 in] depth

* - For Input Shaft Hole Versions **SH** and **SB**.

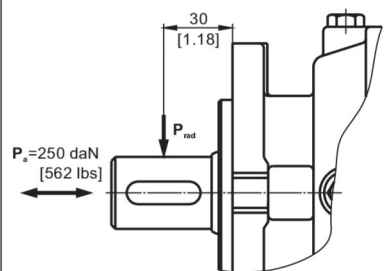
LOAD CURVE



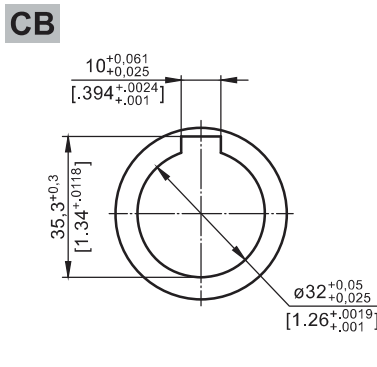
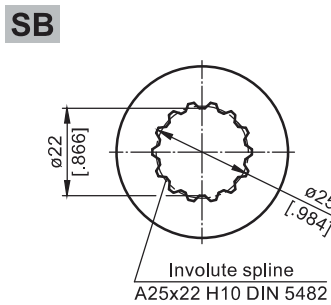
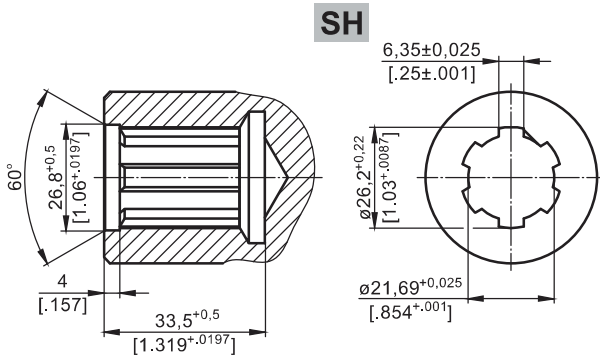
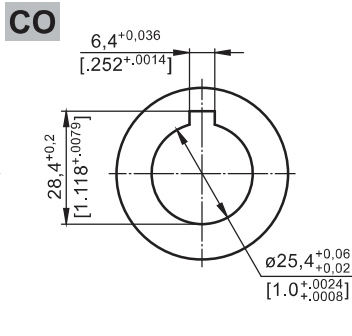
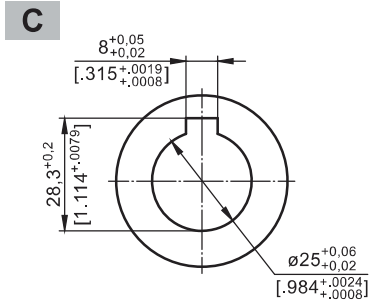
SPECIFICATION DATA

Description LB/288...	7	14	21	32	43	63
*Min. Static Torque, daNm [lb-in]	6-8 [531-708]	13-15 [1150-1327]	20-22 [1770-1947]	31-34 [2743-3009]	41-45 [3628-3982]	61-64 [5399-5665]
Opening Pressure, min bar [PSI]	4-5 [58-73]	8-9 [116-130]	12-13 [174-188]	18-20 [260-290]	24-26 [348-377]	38-39 [550-565]
	max 300 [4350]					
Min. oil quantity for brake releasing, cm ³ [in ³]	7 - 8 [.427 - .488]					
Oil volume, cm ³ [in ³]	50 - 120 [3.5 - 7.35]					
Max. Pressure in drain space, bar [PSI]	0,5 [7.25]					
Weight, kg [lb]	9 [19.8]					

*Static torque is obtained at working pressure - 0 bar [0 PSI].

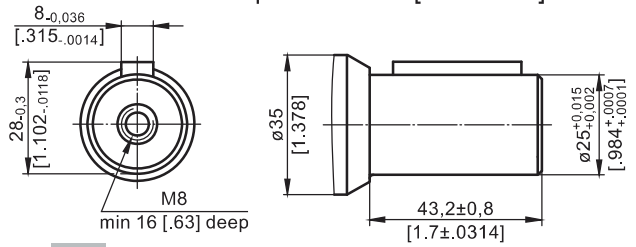


INPUT SHAFT HOLES

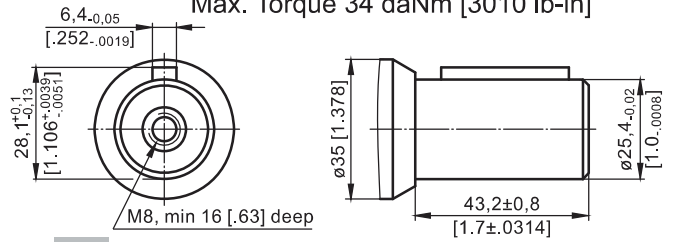


OUTPUT SHAFT EXTENSIONS

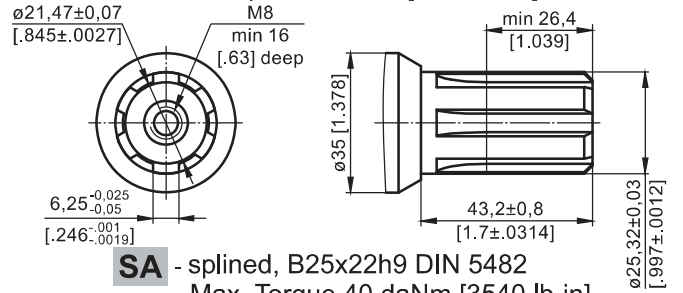
C - ∅25 straight, Parallel key A8x7x30 DIN 6885
Max. Torque 34 daNm [3010 lb-in]



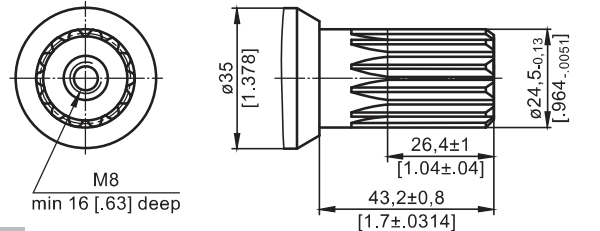
CO - ∅1" straight, Parallel key 1/4"x1/4"x1/4" BS46
Max. Torque 34 daNm [3010 lb-in]



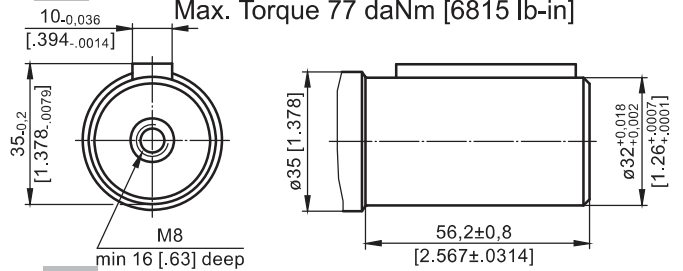
SH - splined, BS 2059 (SAE 6B)
Max. Torque 40 daNm [3540 lb-in]



SA - splined, B25x22h9 DIN 5482
Max. Torque 40 daNm [3540 lb-in]



CB - ∅32 straight, Parallel key A10x8x45 DIN 6885
Max. Torque 77 daNm [6815 lb-in]



KB - tapered, Parallel key B6x6x20 DIN 6885
Max. Torque 95 daNm [8400 lb-in]

